





Confirmed to IEC Safety Standard
(IEC60598, IEC61347)



2
YEARS
WARRANTY

ORBIS COB DOWNLIGHT (ROUND)

| Code | Item | Watts | Colour Temp. | Power Factor | Beam Angle | Dimension | Cut Size | MRP Per Pc. | Pkg Per Carton |
|----------|----------------|-------|--------------|--------------|------------|-----------|----------|-------------|----------------|
| KLCO1001 | KLCO-3W-CW-RD | 3w | 6500K | >0.50 | 38° | Ø66X30 | Ø55 | ₹ 499.00 | 100Pcs |
| KLCO1002 | KLCO-3W-NW-RD | 3w | 4000K | >0.50 | 38° | Ø66X30 | Ø55 | ₹ 499.00 | 100Pcs |
| KLCO1003 | KLCO-3W-WW-RD | 3w | 3000K | >0.50 | 38° | Ø66X30 | Ø55 | ₹ 499.00 | 100Pcs |
| KLCO1004 | KLCO-6W-CW-RD | 6w | 6500K | >0.50 | 38° | Ø80X45 | Ø70 | ₹ 699.00 | 50Pcs |
| KLCO1005 | KLCO-6W-NW-RD | 6w | 4000K | >0.50 | 38° | Ø80X45 | Ø70 | ₹ 699.00 | 50Pcs |
| KLCO1006 | KLCO-6W-WW-RD | 6w | 3000K | >0.50 | 38° | Ø80X45 | Ø70 | ₹ 699.00 | 50Pcs |
| KLCO1007 | KLCO-9W-CW-RD | 9w | 6500K | >0.95 | 38° | Ø90X65 | Ø80 | ₹ 1099.00 | 50Pcs |
| KLCO1008 | KLCO-9W-NW-RD | 9w | 4000K | >0.95 | 38° | Ø90X65 | Ø80 | ₹ 1099.00 | 50Pcs |
| KLCO1009 | KLCO-9W-WW-RD | 9w | 3000K | >0.95 | 38° | Ø90X65 | Ø80 | ₹ 1099.00 | 50Pcs |
| KLCO1010 | KLCO-16W-CW-RD | 16w | 6500K | >0.95 | 50° | Ø110XH85 | Ø100 | ₹ 1399.00 | 30Pcs |
| KLCO1011 | KLCO-16W-NW-RD | 16w | 4000K | >0.95 | 50° | Ø110XH85 | Ø100 | ₹ 1399.00 | 30Pcs |
| KLCO1012 | KLCO-16W-WW-RD | 16w | 3000K | >0.95 | 50° | Ø110XH85 | Ø100 | ₹ 1399.00 | 30Pcs |
| KLCO1013 | KLCO-24W-CW-RD | 24w | 6500K | >0.95 | 50° | Ø145XH85 | Ø135 | ₹ 1999.00 | 20Pcs |
| KLCO1014 | KLCO-24W-NW-RD | 24w | 4000K | >0.95 | 50° | Ø145XH85 | Ø135 | ₹ 1999.00 | 20Pcs |
| KLCO1015 | KLCO-24W-WW-RD | 24w | 3000K | >0.95 | 50° | Ø145XH85 | Ø135 | ₹ 1999.00 | 20Pcs |
| KLCO1016 | KLCO-30W-CW-RD | 30w | 6500K | >0.95 | 50° | Ø145XH85 | Ø135 | ₹ 2499.00 | 20Pcs |
| KLCO1017 | KLCO-30W-NW-RD | 30w | 4000K | >0.95 | 50° | Ø145XH85 | Ø135 | ₹ 2499.00 | 20Pcs |
| KLCO1018 | KLCO-30W-WW-RD | 30w | 3000K | >0.95 | 50° | Ø145XH85 | Ø135 | ₹ 2499.00 | 20Pcs |
| KLCO1019 | KLCO-40W-CW-RD | 40w | 6500K | >0.95 | 50° | Ø155XH160 | Ø145 | ₹ 3499.00 | 10Pcs |
| KLCO1020 | KLCO-40W-NW-RD | 40w | 4000K | >0.95 | 50° | Ø155XH160 | Ø145 | ₹ 3499.00 | 10Pcs |
| KLCO1021 | KLCO-40W-WW-RD | 40w | 3000K | >0.95 | 50° | Ø155XH160 | Ø145 | ₹ 3499.00 | 10Pcs |

ORBIS COB DOWNLIGHT (SQUARE)

| Code | Item | Watts | Colour Temp. | Power Factor | Beam Angle | Dimension | Cut Size | MRP Per Pc. | Pkg Per Carton |
|----------|---------------|-------|--------------|--------------|------------|-----------|----------|-------------|----------------|
| KLCO2001 | KLCO-3W-CW-SQ | 3W | 6500K | >0.50 | 38° | 66x66x30 | 55x55 | ₹ 499.00 | 100Pcs |
| KLCO2002 | KLCO-3W-NW-SQ | 3W | 4000K | >0.50 | 38° | 66x66x30 | 55x55 | ₹ 499.00 | 100Pcs |
| KLCO2003 | KLCO-3W-WW-SQ | 3W | 3000K | >0.50 | 38° | 66x66x30 | 55x55 | ₹ 499.00 | 100Pcs |
| KLCO2004 | KLCO-6W-CW-SQ | 6W | 6500K | >0.50 | 38° | 80x80x45 | 70x70 | ₹ 699.00 | 50Pcs |
| KLCO2005 | KLCO-6W-NW-SQ | 6W | 4000K | >0.50 | 38° | 80x80x45 | 70x70 | ₹ 699.00 | 50Pcs |
| KLCO2006 | KLCO-6W-WW-SQ | 6W | 3000K | >0.50 | 38° | 80x80x45 | 70x70 | ₹ 699.00 | 50Pcs |
| KLCO2007 | KLCO-9W-CW-SQ | 9W | 6500K | >0.95 | 38° | 90x90x65 | 80x80 | ₹ 1099.00 | 50Pcs |
| KLCO2008 | KLCO-9W-NW-SQ | 9W | 4000K | >0.95 | 38° | 90x90x65 | 80x80 | ₹ 1099.00 | 50Pcs |
| KLCO2009 | KLCO-9W-WW-SQ | 9W | 3000K | >0.95 | 38° | 90x90x65 | 80x80 | ₹ 1099.00 | 50Pcs |


IMPORTED & MARKETING BY :
K-ONN MARKETING
 Adinath Trade Complex, Shop No. 70,
 Adinath Nagar, Madhavaram,
 Chennai - 600060 (Tamil Nadu)
 Customer Care : +91 98355 98355



ATOM
LED
FLOOD LIGHT

IP65



2
YEARS
WARRANTY



Surge Shield
upto 4 KV



Operating
Voltage
100-300V

>0.95
Power
Factor



120°
Beam
Angle



Life Time
30000 Hours



High
Brightness



5500
Luminous
Flux



Fluorescence
Proof



High
CRI 80



25%
Energy
Saving



ATOM

50W

IP65



Lights of New Generation

Tech Specs :

- Confirming to LM-80 Standard 2835 LED with P.C.T. Technology & <3% light decay.
- 110-120 Lumens per Watt.
- Ultimate Tensile Strength Aluminium Body for constant heat dissipation.
- Best of class IP66 Driver with <9% T.H.D. and up to 4KV surge protection.
- Long life span, low temperature rising.
- No UV or IR Radiation.



| Code | Item | Watts | Color Temp. | Power Factor | Dimension | M.R.P. Per Pc. | Pkg./Ctn |
|----------|--------------|-------|-------------|--------------|--------------|----------------|----------|
| KLFA1001 | KLFA-30W-CW | 30W | 6500K | >0.95 | 210x150x30mm | ₹ 1899.00 | 10Pc |
| KLFA1002 | KLFA-50W-CW | 50W | 6500K | >0.95 | 245x190x35mm | ₹ 2399.00 | 10Pc |
| KLFA1003 | KLFA-100W-CW | 100W | 6500K | >0.95 | 320x250x45mm | ₹ 4399.00 | 05Pc |
| KLFA1004 | KLFA-150W-CW | 150W | 6500K | >0.95 | 380x300x60mm | ₹ 6499.00 | 04Pc |



Cautions :

- All the LED products should not be immersed in water for long time.
- Make sure the products are out of reach from children.
- Please don't install in flammable, explosive or corrosive circumstances.
- If the glass is broken, replace it immediately.

Applications :

Applicable for Home, Shop, Hotel, Warehouse, Garden, Hoarding, Shopping Mall, Parking lot etc.



IMPORTED & MARKETED BY :

K-ONN MARKETING
Adinath Trade Complex, Shop No. 70,
Adinath Nagar, Madhavaram,
Chennai - 600060 (Tamil Nadu)
Customer Care : +91 98355 98355



IP65
LED
HIGH BAY

Tech Specs.

Confirming to LM-80 Standard 3030 LED with P.C.T. Technology & <3% light decay.

Ultimate Tensile Strength Aluminium Body for Constant heat dissipation.

BIS Approved IP66 Driver with <9% T.H.D. and up to 4KV surge protection

110-120 lumens per watt.

3
YEARS
WARRANTY



Surge
Shield
upto 4 KV



Operating
Voltage
100-300V

- >0.97**
Power Factor
- 120°**
Beam Angle
- Life Time**
30000 Hours
- High**
Brightness
- Fluctuation**
Proof
- HIGH**
CRI 80
- 88%**
Energy Saving

Galaxy High Bay Led Light

(price with effects from February 2018)

| Code | Item | Watts | Color Temp. | Power Factor | Dimension | M.R.P. Per Pc. | Pkg./Ctn |
|----------|--------------|-------|-------------|--------------|------------|----------------|----------|
| KLHG1001 | KLHG-50W-CW | 50W | 6500K | >0.97 | Ø350x235mm | ₹ 5499.00 | 1Pc |
| KLHG1002 | KLHG-100W-CW | 100W | 6500K | >0.97 | Ø275x115mm | ₹ 10499.00 | 1Pc |
| KLHG1003 | KLHG-150W-CW | 150W | 6500K | >0.97 | Ø325x133mm | ₹ 14999.00 | 1Pc |
| KLHG1004 | KLHG-200W-CW | 200W | 6500K | >0.97 | Ø385x150mm | ₹ 18999.00 | 1Pc |

IP65
LED
HIGH BAY

Our range of Galaxy LED High Bay lighting is designed specifically to replace conventional lighting in a wide variety of industrial applications, both indoor and outdoor. High Bay is a great for applications such as:

Oil, Gas & Petrochemical

Power Generation

Water & Sewage

Food & Beverage

Pharmaceutical

Manufacturing

Warehousing

Cold Storage

Chemical

Mining



IMPORTED & MARKETED BY :

K-ONN MARKETING
Adinath Trade Complex, Shop No. 70,
Adinath Nagar, Madhavaram,
Chennai - 600060 (Tamil Nadu)
Customer Care : +91 98355 98355



Lights of New Generation



Colour Changeable
3 in 1 LED Mirror Light



IRIS
LED MIRROR LIGHT



IRIS

LED MIRROR LIGHT

3 in 1

Surge 2.5kv

2835 LED Chip

1350 Lumens



CAUTION

Not for outdoor use
Incompatible with dimmer / remote control
Operating temperature : -20°C to + 60°C

SPECIFICATION

CCT : WH/NW/WW (3 in 1)
Operating Voltage : AC85 - 300V
Power Factor - > 0.95

Application : Dressing Table, Wall light, Commercial Outlet, Displays, Vanity Mirrors.



HIGH BRIGHTNESS
SOFT & FLICKER-FREE



ENERGY
SAVING

2

YEARS
WARRANTY



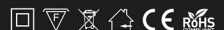
EASY
INSTALLATION



ITEM NAME : IRIS 3 in 1 Colour Changeable Mirror light
ITEM DESCRIPTION : 12W, 1.5 FT.
MRP : 1899/- Per pc. (Inclusive of all Taxes)

IMPORTED & MARKETED BY :

K-ONN MARKETING
Adinath Trade Complex, Shop No. 70,
Adinath Nagar, Madhavaram,
Chennai - 600060 (Tamil Nadu)
Customer Care : +91 98355 98355





OVOLUX



KONN

IP66
50W

W.E.F. October 2017

| Code | Item | Watts | Col. Temp. | Luminous Flux | M.R.P. | Pkg./Ctn. |
|-----------|--------------|-------|------------|---------------|-----------|-----------|
| KLSO 1001 | KLSO-20W-CW | 20W | 6500K | 2000 | ₹ 1499.00 | 20 |
| KLSO 1002 | KLSO-36W-CW | 36W | 6500K | 3600 | ₹ 2399.00 | 10 |
| KLSO 1003 | KLSO-50W-CW | 50W | 6500K | 5000 | ₹ 3299.00 | 10 |
| KLSO 1004 | KLSO-100W-CW | 100W | 6500K | 10000 | ₹ 5999.00 | 5 |

Applications :

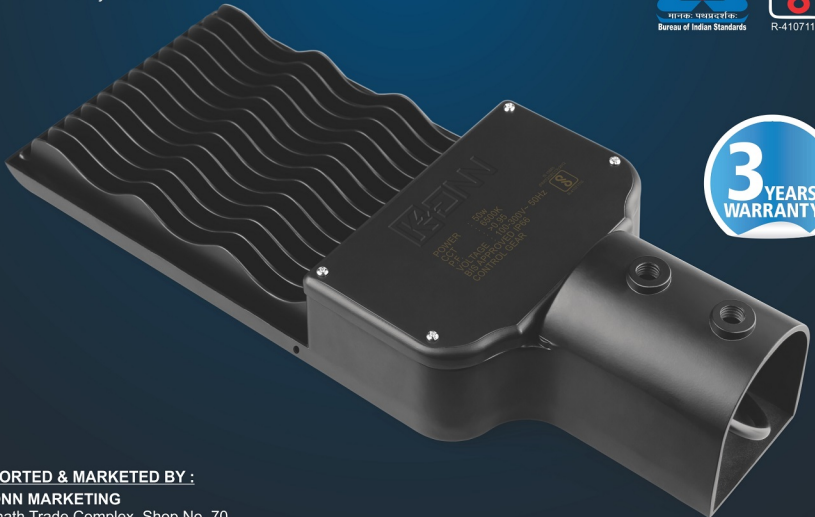
Street, Parking Lot, Terrace, Garden, Playground, Backyard etc.

Tech Specs :

- Confirming to **LM-80** Standard 2835 LED with P.C.T. Technology & <3% light decay.
- **110-120** Lumens per Watt.
- Ultimate Tensile Strength Aluminium Body for constant heat dissipation.
- Best of class IP66 Driver with T.H.D. <9% and up to **6kv** surge protection.
- Operating Voltage **100-300V**
- Long life span, low temperature rising.
- No **UV** or **IR** Radiation.
- Driver Efficiency >**90%**.



IS 15886 (PART 2/SEC13):2012



IMPORTED & MARKETED BY :

K-ONN MARKETING

Adinath Trade Complex, Shop No. 70,
Adinath Nagar, Madhavaram,
Chennai - 600060 (Tamil Nadu)
Customer Care : +91 98355 98355



- 2 Years Warranty
- High Grade Aluminium

New Generation
LED BATTEN LIGHTS

Packed with Features

2 YEARS WARRANTY

EASY INSTALLATION

ENERGY SAVING

HIGH BRIGHTNESS
SOFT & FLICKER-FREE

6X BETTER THAN TRADITIONAL FLUORESCENT TUBES

- High Grade Aluminium • SMD Chips for longer Life span
- Excellent CRI • No Heavy Metals & no Harmful Gases



Applications



Home



Office



Building



Hospital



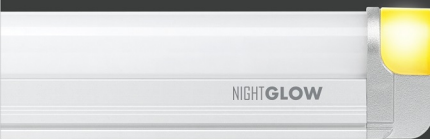
Shop / Store



Restaurant



Parking



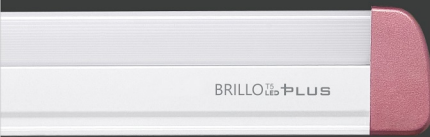
Length : 4 feet
Power : 36W
CCT : Cool White 6500K
Operating Voltage : 140-300v~
Power Factor : >0.95

NIGHTGLOW

T8 with 1 watt Night Lamp

Multi Purpose LED Batten Light

MRP : ₹ 1499/-
(Inclusive of all Taxes)

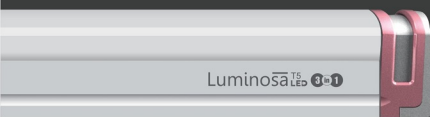


Length : 4 feet
Power : 22W
CCT : 3000K / 6500K
Operating Voltage : 90-300v~
Power Factor : >0.95

BRILLO^{T5} LED PLUS

Extreme Bright High Lumen
LED Batten Light

MRP : ₹ 699/-
(Inclusive of all Taxes)



Length : 4 feet
Power : 22W
CCT : 3 in 1 (6500K / 4000K / 3000K)
Operating Voltage : 85-300v~
Power Factor : >0.95

Luminosa^{T5} LED 3in1

Colour Changeable 3 in 1
LED Batten Light

MRP : ₹ 810/-
(Inclusive of all Taxes)

IMPORTED & MARKETED BY :

K-ONN MARKETING

Adinath Trade Complex, Shop No. 70, Adinath Nagar,

Madhavaram, Chennai - 600060 (Tamil Nadu)

Customer Care : +91 98355 98355



2x2

It's
BRELLA
Super Slim 2x2 LED Panel Light



IP35

**2 YEARS
WARRANTY**

Instant on, No UV, No IR

Flicker free through out

3.5KV Surge Protection

120 Lumens per Watt

Power Factor : ≥ 0.95

No Light Leakage

**BIG
BOLD
BRIGHT &
BEAUTIFUL**



Surge Shield
upto 3.5KV



Flicker Free
Resolution



Operating Voltage
AC 100-300V



Slim Design for easy
fit into false ceilings

BRELLA Super Slim 2x2 LED Panel Light

Price with effect from September 2017

| Code | Item | Watts | Col. Temp. | Dimension | M.R.P. | Pkg./Ctn. |
|------------|--------------|-------|------------|-----------|-----------|-----------|
| KL2X2 1001 | KL2X2-36W-WL | 36W | 3000K | 595x595mm | ₹ 3099.00 | 6 |
| KL2X2 1002 | KL2X2-36W-DL | 36W | 4000K | 595x595mm | ₹ 3099.00 | 6 |
| KL2X2 1003 | KL2X2-36W-CL | 36W | 6500K | 595x595mm | ₹ 3099.00 | 6 |
| KL2X2 1004 | KL2X2-48W-WL | 48W | 3000K | 595x595mm | ₹ 3999.00 | 6 |
| KL2X2 1005 | KL2X2-48W-DL | 48W | 4000K | 595x595mm | ₹ 3999.00 | 6 |
| KL2X2 1006 | KL2X2-48W-CL | 48W | 6500K | 595x595mm | ₹ 3999.00 | 6 |



Applications :

Stores, Corporate Offices,
Buildings, Hospitals, Hotels,
Showrooms, Banks etc.

IMPORTED & MARKETING BY :

K-ONN MARKETING

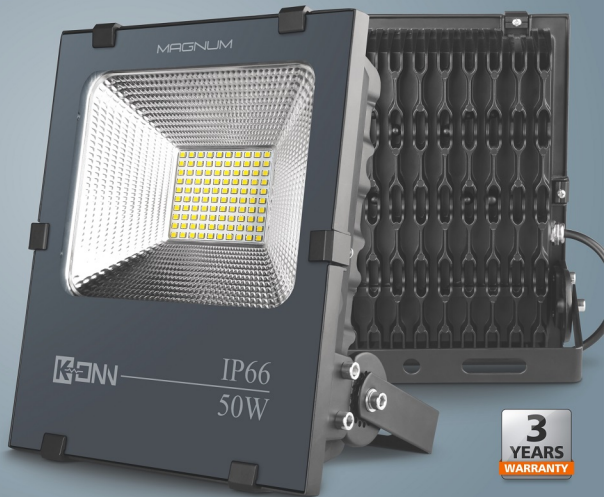
Adinath Trade Complex, Shop No. 70,
Adinath Nagar, Madhavaram,
Chennai - 600060 (Tamil Nadu)
Customer Care : +91 98355 98355





MAGNUM LED FLOOD LIGHT

IP66



Surge Shield
upto 4 KV



Operating Voltage
100-300V



High
Brightness



Life Time
30000 Hours



Fluctuation
Proof



3300
Luminous
Flux



Quality Assurance
Icon



HIGH
CRI 80



120°
Beam
Angle



Energy
Saving



>0.95
Power
Factor



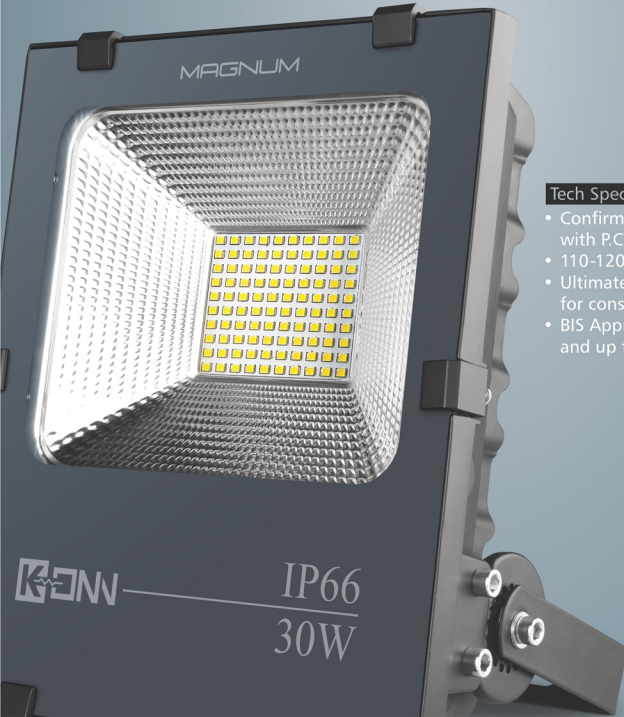
RoHS
Icon



3
YEARS
WARRANTY

MAGNUM LED FLOOD LIGHT (Price with effect from September 2017)

| Code | Item | Watts | Col. Temp. | Product Size | M.R.P. per pc. | Pkg./Ctn. |
|----------|----------------|-------|------------|--------------|----------------|-----------|
| KLFM1001 | KLFM-30W-CW | 30 | 6500K | 190x172x75mm | ₹ 2199.00 | 10 |
| KLFM1002 | KLFM-30W-WW | 30 | 3000K | 190x172x75mm | ₹ 2199.00 | 10 |
| KLFM1003 | KLFM-50W-CW | 50 | 6500K | 242x200x75mm | ₹ 2999.00 | 10 |
| KLFM1004 | KLFM-50W-WW | 50 | 3000K | 242x200x75mm | ₹ 2999.00 | 10 |
| KLFM1005 | KLFM-50W-RED | 50 | ● | 242x200x75mm | ₹ 2999.00 | 10 |
| KLFM1006 | KLFM-50W-GREEN | 50 | ● | 242x200x75mm | ₹ 2999.00 | 10 |
| KLFM1007 | KLFM-50W-BLUE | 50 | ● | 242x200x75mm | ₹ 2999.00 | 10 |
| KLFM1008 | KLFM-100W-CW | 100 | 6500K | 280x253x75mm | ₹ 5499.00 | 4 |
| KLFM1009 | KLFM-100W-WW | 100 | 3000K | 280x253x75mm | ₹ 5499.00 | 4 |
| KLFM1010 | KLFM-150W-CW | 150 | 6500K | 345x310x89mm | ₹ 8100.00 | 2 |
| KLFM1011 | KLFM-150W-WW | 150 | 3000K | 345x310x89mm | ₹ 8100.00 | 2 |
| KLFM1012 | KLFM-200W-CW | 200 | 6500K | 345x310x89mm | ₹ 10800.00 | 2 |
| KLFM1013 | KLFM-200W-WW | 200 | 3000K | 345x310x89mm | ₹ 10800.00 | 2 |



Tech Specs

- Confirming to LM-80 Standard 2835 LED with P.C.T. Technology & <3% light decay.
- 110-120 Lumens per Watt.
- Ultimate Tensile Strength Aluminium Body for constant heat dissipation.
- BIS Approved IP66 Driver with <9% T.H.D. and up to 4kv surge protection.

IMPORTED & MARKETED BY :

K-ONN MARKETING
Adinath Trade Complex, Shop No. 70,
Adinath Nagar, Madhavaram,
Chennai - 600060 (Tamil Nadu)
Customer Care : +91 98355 98355

This is an actual Photograph lit with
20w EDGE Super Slim LED Panel Light



- Thermoplastic & Aluminum for best heat dissipation & thermal management
- Heat wings for optimum heat sink
- Integrated driver with CE & BIS standards



Surge Shield
upto 2.5 KV



Operating
Voltage
85-300V



Slim Design for
easy fit into
false ceilings



BIS SAFETY
Standards
Registered

EDGE SUPER SLIM LED PANEL LIGHT (ROUND)

| Code | Item | Watts | Col. Temp. | Dimension | Cut Dia. (mm) | M.R.P. | Pkg./Ctn. |
|---------|---------------|-------|------------|------------|---------------|-----------|-----------|
| KLE1001 | KLE-3W-CW-RD | 3 | 6500K | 93 x 28mm | 75 ϕ | ₹ 270.00 | 60 |
| KLE1002 | KLE-3W-NW-RD | 3 | 4000K | 93 x 28mm | 75 ϕ | ₹ 270.00 | 60 |
| KLE1003 | KLE-3W-WW-RD | 3 | 3000K | 93 x 28mm | 75 ϕ | ₹ 270.00 | 60 |
| KLE1004 | KLE-6W-CW-RD | 6 | 6500K | 118 x 28mm | 100 ϕ | ₹ 360.00 | 60 |
| KLE1005 | KLE-6W-NW-RD | 6 | 4000K | 118 x 28mm | 100 ϕ | ₹ 360.00 | 60 |
| KLE1006 | KLE-6W-WW-RD | 6 | 3000K | 118 x 28mm | 100 ϕ | ₹ 360.00 | 60 |
| KLE1007 | KLE-10W-CW-RD | 10 | 6500K | 142 x 28mm | 125 ϕ | ₹ 610.00 | 40 |
| KLE1008 | KLE-10W-NW-RD | 10 | 4000K | 142 x 28mm | 125 ϕ | ₹ 610.00 | 40 |
| KLE1009 | KLE-10W-WW-RD | 10 | 3000K | 142 x 28mm | 125 ϕ | ₹ 610.00 | 40 |
| KLE1010 | KLE-15W-CW-RD | 15 | 6500K | 168 x 28mm | 150 ϕ | ₹ 830.00 | 30 |
| KLE1011 | KLE-15W-NW-RD | 15 | 4000K | 168 x 28mm | 150 ϕ | ₹ 830.00 | 30 |
| KLE1012 | KLE-15W-WW-RD | 15 | 3000K | 168 x 28mm | 150 ϕ | ₹ 830.00 | 30 |
| KLE1013 | KLE-20W-CW-RD | 20 | 6500K | 218 x 28mm | 200 ϕ | ₹ 1100.00 | 20 |
| KLE1014 | KLE-20W-NW-RD | 20 | 4000K | 218 x 28mm | 200 ϕ | ₹ 1100.00 | 20 |
| KLE1015 | KLE-20W-WW-RD | 20 | 3000K | 218 x 28mm | 200 ϕ | ₹ 1100.00 | 20 |

EDGE SUPER SLIM LED PANEL LIGHT (SQUARE)

| Code | Item | Watts | Col. Temp. | Dimension | Cut Dia. (mm) | M.R.P. | Pkg./Ctn. |
|---------|---------------|-------|------------|------------|---------------|-----------|-----------|
| KLE2001 | KLE-3W-CW-SQ | 3 | 6500K | 93 x 28mm | 75 x 75 | ₹ 270.00 | 60 |
| KLE2002 | KLE-3W-NW-SQ | 3 | 4000K | 93 x 28mm | 75 x 75 | ₹ 270.00 | 60 |
| KLE2003 | KLE-3W-WW-SQ | 3 | 3000K | 93 x 28mm | 75 x 75 | ₹ 270.00 | 60 |
| KLE2004 | KLE-6W-CW-SQ | 6 | 6500K | 118 x 28mm | 100 x 100 | ₹ 360.00 | 60 |
| KLE2005 | KLE-6W-NW-SQ | 6 | 4000K | 118 x 28mm | 100 x 100 | ₹ 360.00 | 60 |
| KLE2006 | KLE-6W-WW-SQ | 6 | 3000K | 118 x 28mm | 100 x 100 | ₹ 360.00 | 60 |
| KLE2007 | KLE-10W-CW-SQ | 10 | 6500K | 142 x 28mm | 125 x 125 | ₹ 610.00 | 40 |
| KLE2008 | KLE-10W-NW-SQ | 10 | 4000K | 142 x 28mm | 125 x 125 | ₹ 610.00 | 40 |
| KLE2009 | KLE-10W-WW-SQ | 10 | 3000K | 142 x 28mm | 125 x 125 | ₹ 610.00 | 40 |
| KLE2010 | KLE-15W-CW-SQ | 15 | 6500K | 168 x 28mm | 150 x 150 | ₹ 830.00 | 30 |
| KLE2011 | KLE-15W-NW-SQ | 15 | 4000K | 168 x 28mm | 150 x 150 | ₹ 830.00 | 30 |
| KLE2012 | KLE-15W-WW-SQ | 15 | 3000K | 168 x 28mm | 150 x 150 | ₹ 830.00 | 30 |
| KLE2013 | KLE-20W-CW-SQ | 20 | 6500K | 218 x 28mm | 200 x 200 | ₹ 1100.00 | 20 |
| KLE2014 | KLE-20W-NW-SQ | 20 | 4000K | 218 x 28mm | 200 x 200 | ₹ 1100.00 | 20 |
| KLE2015 | KLE-20W-WW-SQ | 20 | 3000K | 218 x 28mm | 200 x 200 | ₹ 1100.00 | 20 |

MARKETED BY :

K-ONN INDIA

202, Bldg. No. 5, Asmi Ind. Estate,

R.M. Road, Goregaon (W),

Mumbai - 400 104 (Maharashtra)

Cust. Care : 022 - 65312345

ILUMINA

LED PANEL LIGHT

Light of New Generation



12.5mm
Height

**SUPER
SLIM
DESIGN**

IS 15085 (Part 2/Sec 13)



R-41057681
Using BIS approved control gear

2 years
warranty



Anti
glare
Diffuser



Robust
Design



HIGH
CRI 80



Fluctuation
Proof



88%
Energy
Saving



Life Time
30000 Hours



120°
Beam
Angle



High
Brightness



Surge Shield
upto 2.5 KV



Operating
Voltage
140-270V



Slim Design for
easy fit into
false ceilings



Flicker
Free

ILUMINA SUPER SLIM LED PANEL LIGHT (ROUND)

| Code | Item | Watts | Col. Temp. | Dimension | Cut Dia. (mm) | M.R.P. | Pkg./Ctn. |
|---------|---------------|-------|------------|--------------|---------------|-----------|-----------|
| KLI1001 | KLI-3W-CW-RD | 3 | 6500K | 90 x 12.5mm | 80 ϕ | ₹ 415.00 | 50 |
| KLI1002 | KLI-3W-NW-RD | 3 | 4000K | 90 x 12.5mm | 80 ϕ | ₹ 415.00 | 50 |
| KLI1003 | KLI-3W-WW-RD | 3 | 3000K | 90 x 12.5mm | 80 ϕ | ₹ 415.00 | 50 |
| KLI1004 | KLI-6W-CW-RD | 6 | 6500K | 120 x 12.5mm | 110 ϕ | ₹ 510.00 | 30 |
| KLI1005 | KLI-6W-NW-RD | 6 | 4000K | 120 x 12.5mm | 110 ϕ | ₹ 510.00 | 30 |
| KLI1006 | KLI-6W-WW-RD | 6 | 3000K | 120 x 12.5mm | 110 ϕ | ₹ 510.00 | 30 |
| KLI1007 | KLI-12W-CW-RD | 12 | 6500K | 172 x 12.5mm | 160 ϕ | ₹ 810.00 | 20 |
| KLI1008 | KLI-12W-NW-RD | 12 | 4000K | 172 x 12.5mm | 160 ϕ | ₹ 810.00 | 20 |
| KLI1009 | KLI-12W-WW-RD | 12 | 3000K | 172 x 12.5mm | 160 ϕ | ₹ 810.00 | 20 |
| KLI1010 | KLI-18W-CW-RD | 18 | 6500K | 225 x 12.5mm | 215 ϕ | ₹ 1260.00 | 20 |
| KLI1011 | KLI-18W-NW-RD | 18 | 4000K | 225 x 12.5mm | 215 ϕ | ₹ 1260.00 | 20 |
| KLI1012 | KLI-18W-WW-RD | 18 | 3000K | 225 x 12.5mm | 215 ϕ | ₹ 1260.00 | 20 |
| KLI1013 | KLI-24W-CW-RD | 24 | 6500K | 305 x 12.5mm | 285 ϕ | ₹ 2005.00 | 10 |
| KLI1014 | KLI-24W-NW-RD | 24 | 4000K | 305 x 12.5mm | 285 ϕ | ₹ 2005.00 | 10 |
| KLI1015 | KLI-24W-WW-RD | 24 | 3000K | 305 x 12.5mm | 285 ϕ | ₹ 2005.00 | 10 |

ILUMINA SUPER SLIM LED PANEL LIGHT (SQUARE)

| Code | Item | Watts | Col. Temp. | Dimension | Cut Dia. (mm) | M.R.P. | Pkg./Ctn. |
|---------|---------------|-------|------------|--------------|---------------|-----------|-----------|
| KLI2001 | KLI-3W-CW-SQ | 3 | 6500K | 90 x 12.5mm | 80 x 80 | ₹ 415.00 | 50 |
| KLI2002 | KLI-3W-NW-SQ | 3 | 4000K | 90 x 12.5mm | 80 x 80 | ₹ 415.00 | 50 |
| KLI2003 | KLI-3W-WW-SQ | 3 | 3000K | 90 x 12.5mm | 80 x 80 | ₹ 415.00 | 50 |
| KLI2004 | KLI-6W-CW-SQ | 6 | 6500K | 120 x 12.5mm | 110 x 110 | ₹ 510.00 | 30 |
| KLI2005 | KLI-6W-NW-SQ | 6 | 4000K | 120 x 12.5mm | 110 x 110 | ₹ 510.00 | 30 |
| KLI2006 | KLI-6W-WW-SQ | 6 | 3000K | 120 x 12.5mm | 110 x 110 | ₹ 510.00 | 30 |
| KLI2007 | KLI-12W-CW-SQ | 12 | 6500K | 172 x 12.5mm | 160 x 160 | ₹ 810.00 | 20 |
| KLI2008 | KLI-12W-NW-SQ | 12 | 4000K | 172 x 12.5mm | 160 x 160 | ₹ 810.00 | 20 |
| KLI2009 | KLI-12W-WW-SQ | 12 | 3000K | 172 x 12.5mm | 160 x 160 | ₹ 810.00 | 20 |
| KLI2010 | KLI-18W-CW-SQ | 18 | 6500K | 225 x 12.5mm | 215 x 215 | ₹ 1260.00 | 20 |
| KLI2011 | KLI-18W-NW-SQ | 18 | 4000K | 225 x 12.5mm | 215 x 215 | ₹ 1260.00 | 20 |
| KLI2012 | KLI-18W-WW-SQ | 18 | 3000K | 225 x 12.5mm | 215 x 215 | ₹ 1260.00 | 20 |
| KLI2013 | KLI-24W-CW-SQ | 24 | 6500K | 305 x 12.5mm | 285 x 285 | ₹ 2005.00 | 10 |
| KLI2014 | KLI-24W-NW-SQ | 24 | 4000K | 305 x 12.5mm | 285 x 285 | ₹ 2005.00 | 10 |
| KLI2015 | KLI-24W-WW-SQ | 24 | 3000K | 305 x 12.5mm | 285 x 285 | ₹ 2005.00 | 10 |

MARKETED BY :

K-ONN INDIA

202, Bldg. No. 5, Asmi Ind. Estate,

R.M. Road, Goregaon (W),

Mumbai - 400 104 (Maharashtra)

Cust. Care: 022 - 65312345



KENN

BRILLO T5 LED

LED BATTEN LIGHT

2

YEARS
WARRANTY



EASY
INSTALLATION



ENERGY
SAVING



HIGH BRIGHTNESS
SOFT & FLICKER-FREE

6X

BETTER THAN
TRADITIONAL
FLUORESCENT TUBES



20W

NO HEAVY METALS
HARMFUL GASES



IS 10322
(PART 5/SEC 1):2012

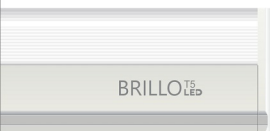


R-41051896

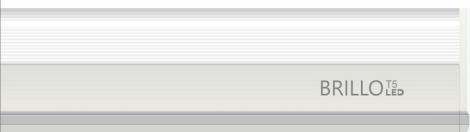
- HIGH GRADE **ALUMINIUM**
- SMD Chips for longer Life span
- EXCELLENT CRI

BRILLO T5 LED BATTEN LIGHT

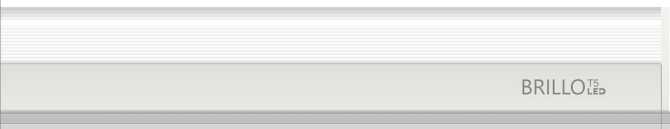
| Code | Item | Watts | Col. Temp. | Dimension | Lumens | M.R.P. | Pkg./Ctn. |
|---------|-----------------|-------|------------|-----------|--------|----------|-----------|
| KLB1001 | KLB-5W-CW-1F | 5 | 6500K | 1 FEET | 500 | ₹ 390.00 | 25 |
| KLB1002 | KLB-5W-WW-1F | 5 | 3000K | 1 FEET | 500 | ₹ 390.00 | 25 |
| KLB1003 | KLB-5W-RED-1F | 5 | ● | 1 FEET | 500 | ₹ 440.00 | 25 |
| KLB1004 | KLB-5W-GREEN-1F | 5 | ● | 1 FEET | 500 | ₹ 440.00 | 25 |
| KLB1005 | KLB-5W-BLUE-1F | 5 | ● | 1 FEET | 500 | ₹ 440.00 | 25 |
| KLB1006 | KLB-9W-CW-2F | 9 | 6500K | 2 FEET | 900 | ₹ 475.00 | 25 |
| KLB1007 | KLB-9W-WW-2F | 9 | 3000K | 2 FEET | 900 | ₹ 475.00 | 25 |
| KLB1008 | KLB-20W-CW-4F | 20 | 6500K | 4 FEET | 2000 | ₹ 525.00 | 25 |
| KLB1009 | KLB-20W-WW-4F | 20 | 3000K | 4 FEET | 2000 | ₹ 525.00 | 25 |



1 Ft.



2 Ft.



4 Ft.

MARKETED BY :

K-ONN INDIA

Office No:1001, 10th floor, CTS No.844,
Plot No.14, Remi Commercio Bldg,
Link Road, Behind Yash Raj Studio,
Andheri West. Mumbai-400053





LuminoSa^{T5}
LED



22W

Extrude Aluminium body with Anti-Corrosion

2

YEARS
WARRANTY



EASY
INSTALLATION

88%

ENERGY
SAVING



HIGH BRIGHTNESS
& FLICKER FREE

105 LM

LUMENS
PER WATT

2835

SMD CHIPS FOR
BRIGHTER & LONGER
LIFE SPAN

IS 10322
(PARTS/SECT)-2012



R-41051896

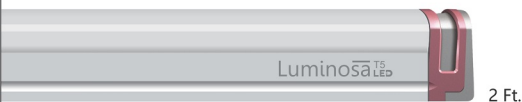


LUMINOSA T5 LED BATTEN LIGHT

| Code | Item | Watts | Col. Temp. | Dimension | Lumens | M.R.P. | Pkg./Ctn. |
|---------|--------------|-------|------------|-----------|--------|----------|-----------|
| KLL1001 | KLL-5W-CW-1F | 5 | 6500K | 1 FEET | 500 | ₹ 415.00 | 25 |
| KLL1002 | KLL-5W-WW-1F | 5 | 3000K | 1 FEET | 500 | ₹ 415.00 | 25 |

| | | | | | | | |
|---------|---------------|----|-------|--------|------|----------|----|
| KLL1003 | KLL-10W-CW-2F | 10 | 6500K | 2 FEET | 1000 | ₹ 510.00 | 25 |
| KLL1004 | KLL-10W-WW-2F | 10 | 3000K | 2 FEET | 1000 | ₹ 510.00 | 25 |

| | | | | | | | |
|---------|---------------|----|-------|--------|------|----------|----|
| KLL1005 | KLL-22W-CW-4F | 22 | 6500K | 4 FEET | 2300 | ₹ 630.00 | 25 |
| KLL1006 | KLL-22W-WW-4F | 22 | 3000K | 4 FEET | 2300 | ₹ 630.00 | 25 |



MARKETED BY :

K-ONN INDIA

Office No:1001, 10th floor, CTS No.844,
Plot No.14, Remi Comercio Bldg,
Link Road, Behind Yash Raj Studio,
Andheri West. Mumbai-400053





2
years
warranty



⚡ Operating
Voltage
85-300V

📄 BIS SAFETY
Standards
Registered



supra
LED

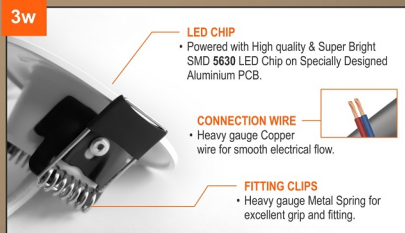
SMD Downlight
Spot Junction Box Fitting

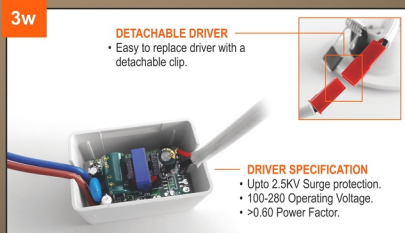
| Code | Item | Watts | Col. Temp. | P.F. | Dimension | Cut Dia. (mm) | M.R.P. | Pkg./Ctn. |
|----------|---------------|-------|------------|-------|-------------|---------------|----------|-----------|
| KLDS1001 | KLDS-6W-CW | 6W | 6500K | >0.90 | 110 x H55mm | 75 ϕ | ₹ 360.00 | 60 |
| KLDS1002 | KLDS-6W-WW | 6W | 3000K | >0.90 | 110 x H55mm | 75 ϕ | ₹ 360.00 | 60 |
| KLDS1003 | KLDS-6W-RED | 6W | 3000K | >0.90 | 110 x H55mm | 75 ϕ | ₹ 360.00 | 60 |
| KLDS1004 | KLDS-6W-GREEN | 6W | 3000K | >0.90 | 110 x H55mm | 75 ϕ | ₹ 360.00 | 60 |
| KLDS1005 | KLDS-6W-BLUE | 6W | 3000K | >0.90 | 110 x H55mm | 75 ϕ | ₹ 360.00 | 60 |
| KLDS1006 | KLDS-6W-PINK | 6W | 3000K | >0.90 | 110 x H55mm | 75 ϕ | ₹ 360.00 | 60 |
| KLDS1007 | KLDS-3W-CW | 3W | 6500K | >0.60 | 72 x H26mm | 55 ϕ | ₹ 275.00 | 100 |
| KLDS1008 | KLDS-3W-WW | 3W | 3000K | >0.60 | 72 x H26mm | 55 ϕ | ₹ 275.00 | 100 |
| KLDS1009 | KLDS-3W-RED | 3W | 3000K | >0.60 | 72 x H26mm | 55 ϕ | ₹ 275.00 | 100 |
| KLDS1010 | KLDS-3W-GREEN | 3W | 3000K | >0.60 | 72 x H26mm | 55 ϕ | ₹ 275.00 | 100 |
| KLDS1011 | KLDS-3W-BLUE | 3W | 3000K | >0.60 | 72 x H26mm | 55 ϕ | ₹ 275.00 | 100 |
| KLDS1012 | KLDS-3W-PINK | 3W | 3000K | >0.60 | 72 x H26mm | 55 ϕ | ₹ 275.00 | 100 |

6w

3w

6w

3w

6w

3w

IMPORTED & MARKETED BY :
K-ONN MARKETING

 Adinath Trade Complex, Shop No. 70, Adinath Nagar, Madhavaram,
 Chennai - 600060 (Tamil Nadu) Customer Care : +91 98355 98355



RAGGIO
LED



Power : 24W
CCT : 6000K

Rim 3mm only

3 Years
Warranty

LED Surface Downlight

IS 10322
(Part 5/Sec 1) : 2012



R-41062847

FEATURES

Built with high quality SMD
2835 LED chip

Average life time upto
30,000 hours* 3 years
limited warranty

Instant on, no UV, no IR
radiation in the light beam

HIGH
CRI 80

2500
Luminous
Flux



Surge Shield
upto 3.0 KV



Operating
Voltage
85-300V

>0.97
Power
Factor



BIS
approved
control gear



Flicker free

APPLICATIONS

Elevator | Lobby and Balcony | Storage room | Garage and basement area | Toilet

RAGGIO SUPER SLIM LED SURFACE DOWNLIGHT (ROUND)

| Code | Item | Watts | Col. Temp. | Dimension | Lumens | M.R.P. | Pkg./Ctn. |
|---------|---------------|-------|------------|------------|--------|-----------|-----------|
| KLR1001 | KLR-12W-CW-RD | 12 | 6000K | 120 x 35mm | 1250 | ₹ 1100.00 | 40 |
| KLR1002 | KLR-12W-NW-RD | 12 | 4000K | 120 x 35mm | 1250 | ₹ 1100.00 | 40 |
| KLR1003 | KLR-12W-WW-RD | 12 | 3000K | 120 x 35mm | 1250 | ₹ 1100.00 | 40 |
| KLR1004 | KLR-18W-CW-RD | 18 | 6000K | 175 x 35mm | 1875 | ₹ 1500.00 | 30 |
| KLR1005 | KLR-18W-NW-RD | 18 | 4000K | 175 x 35mm | 1875 | ₹ 1500.00 | 30 |
| KLR1006 | KLR-18W-WW-RD | 18 | 3000K | 175 x 35mm | 1875 | ₹ 1500.00 | 30 |
| KLR1007 | KLR-24W-CW-RD | 24 | 6000K | 225 x 35mm | 2500 | ₹ 2200.00 | 20 |
| KLR1008 | KLR-24W-NW-RD | 24 | 4000K | 225 x 35mm | 2500 | ₹ 2200.00 | 20 |
| KLR1009 | KLR-24W-WW-RD | 24 | 3000K | 225 x 35mm | 2500 | ₹ 2200.00 | 20 |

RAGGIO SUPER SLIM LED SURFACE DOWNLIGHT (SQUARE)

| Code | Item | Watts | Col. Temp. | Dimension | Lumens | M.R.P. | Pkg./Ctn. |
|---------|---------------|-------|------------|------------|--------|-----------|-----------|
| KLR2001 | KLR-12W-CW-SQ | 12 | 6000K | 120 x 35mm | 1250 | ₹ 1100.00 | 40 |
| KLR2002 | KLR-12W-NW-SQ | 12 | 4000K | 120 x 35mm | 1250 | ₹ 1100.00 | 40 |
| KLR2003 | KLR-12W-WW-SQ | 12 | 3000K | 120 x 35mm | 1250 | ₹ 1100.00 | 40 |
| KLR2004 | KLR-18W-CW-SQ | 18 | 6000K | 175 x 35mm | 1875 | ₹ 1500.00 | 30 |
| KLR2005 | KLR-18W-NW-SQ | 18 | 4000K | 175 x 35mm | 1875 | ₹ 1500.00 | 30 |
| KLR2006 | KLR-18W-WW-SQ | 18 | 3000K | 175 x 35mm | 1875 | ₹ 1500.00 | 30 |
| KLR2007 | KLR-24W-CW-SQ | 24 | 6000K | 225 x 35mm | 2500 | ₹ 2200.00 | 20 |
| KLR2008 | KLR-24W-NW-SQ | 24 | 4000K | 225 x 35mm | 2500 | ₹ 2200.00 | 20 |
| KLR2009 | KLR-24W-WW-SQ | 24 | 3000K | 225 x 35mm | 2500 | ₹ 2200.00 | 20 |

